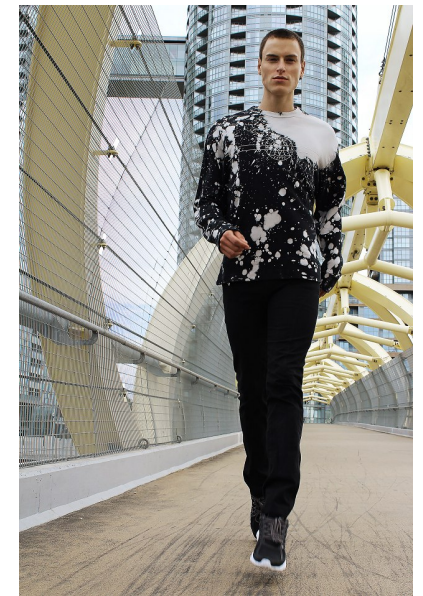




CHRIS

Height 6'3" Chest 39.5" Waist 29" Inseam 33" Collar 14" Sleeve 35"  
Suit 40" Suit Length L Shoe 12 US Hair Brown Eyes Blue/Green



b&m

645 King Street W. Suite 401, Toronto Canada M5V1M5, Telephone: 416 504  
5584, Email: [info@bnmmmodels.com](mailto:info@bnmmmodels.com)