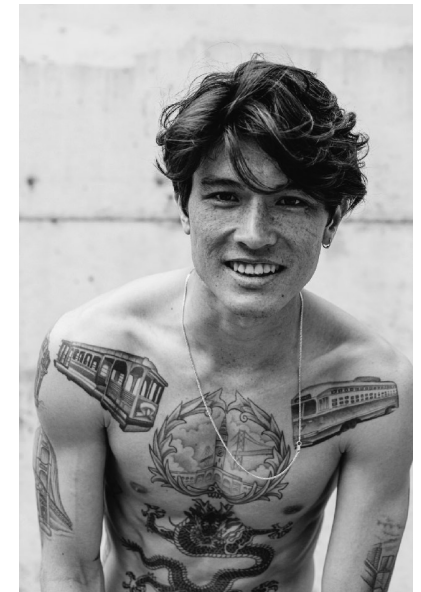
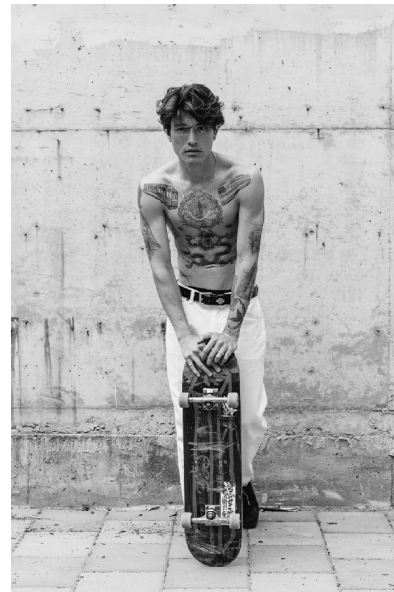
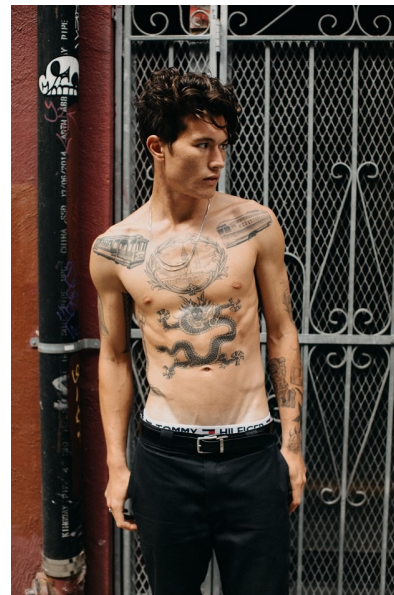




## ZACH HO-SEHER

Height 6'0" Chest 38" Waist 32" Inseam 34" Collar 14" Sleeve 33"  
Suit 38" Suit Length R Shoe 11 US Hair Brown Eyes Brown



b&m

645 King Street W. Suite 401, Toronto Canada M5V1M5, Telephone: 416 504  
5584, Email: [info@bnmmmodels.com](mailto:info@bnmmmodels.com)