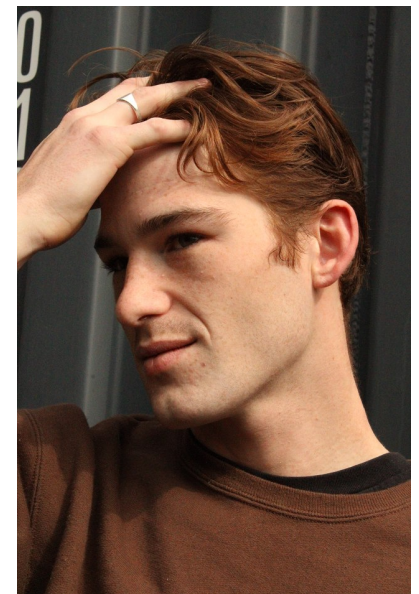
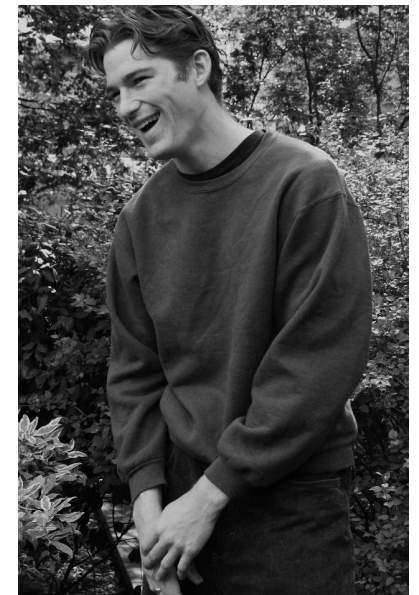




CHRIS

Height 6'4" Waist 35" Inseam 32.5" Collar 15.5" Sleeve 33" Shoe 10 US
Top L Hair Red Eyes Hazel



b&m

645 King Street W. Suite 401, Toronto Canada M5V1M5, Telephone: 416 504
5584, Email: info@bnmmmodels.com